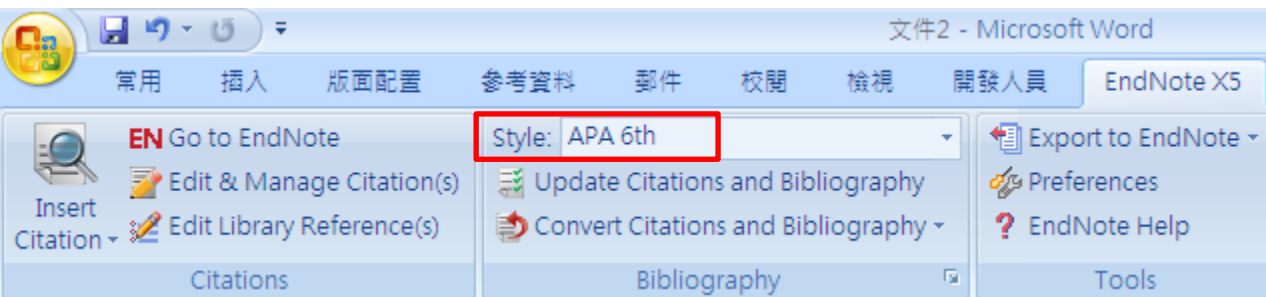


若我的文章中同時會引用中文
和英文的書目格式，該如何將
兩份文件合併呢？

2012.06.18

插入英文的Citations



The purpose of this study was to address factors related to caregiver burnout as a result of caring for an older adult with a chronic disease. (Bazalo et al., 2012) Characteristics of care recipients and caregivers as well as social support were included to identify the relationships with caregiver burnout. The analysis was based on a sample of 334 older adults and their caregivers in Korea. (Kirk et al., 2012) The logistic regression results indicated that the period of being in need of another's help among care-recipients, co-residence, caregivers' health condition, previous care experience, and caregivers' free time were correlated with the caregivers' future caregiving. (Jin et al., 2012)

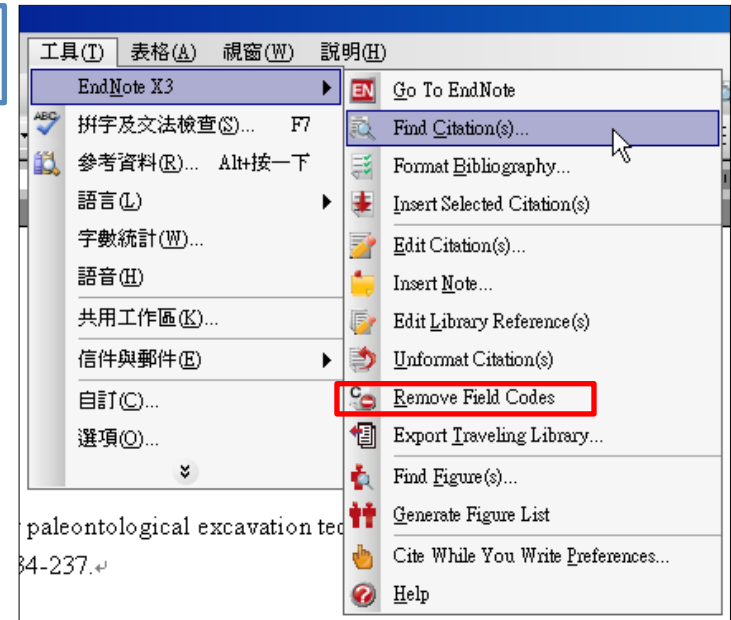
Reference

- Bazalo, G., Weiss, R. C., Bouchard, J. R., Perry, R. G., Wendt, F. L., & Jewell, J. L. (2012). Impact of pen utilization on insulin cost reduction in long-term care facilities. *Consult Pharm*, 27(6), 411-420. doi: 10.4140/TCP.n.2012.411
- Jin, H. Y., Yang, T. H., Kim, D. I., Chung, S. R., Seo, J. S., Jang, J. S., . . . Kim, D. S. (2012). High post-clopidogrel platelet reactivity assessed by a point-of-care assay predicts long-term clinical outcomes in patients with ST-segment elevation myocardial infarction who underwent primary coronary stenting. *Int J Cardiol*. doi: 10.1016/j.ijcard.2012.04.154
- Kirk, S., Beatty, S., Callery, P., Gellatly, J., Milnes, L., & Pryjmachuk, S. (2012). The effectiveness of self-care support interventions for children and young people with long-term conditions: a systematic review. *Child Care Health Dev*. doi: 10.1111/j.1365-2214.2012.01395.x

1. 先在文章內插入英文的 Citations(並使用英文的格式，如APA 6th)
2. 插入全部的英文格式後，移除此份文件的參數。
3. 請在另一份沒有參數的文件中，繼續插入中文的 Citations(請改成中文的APA格式)

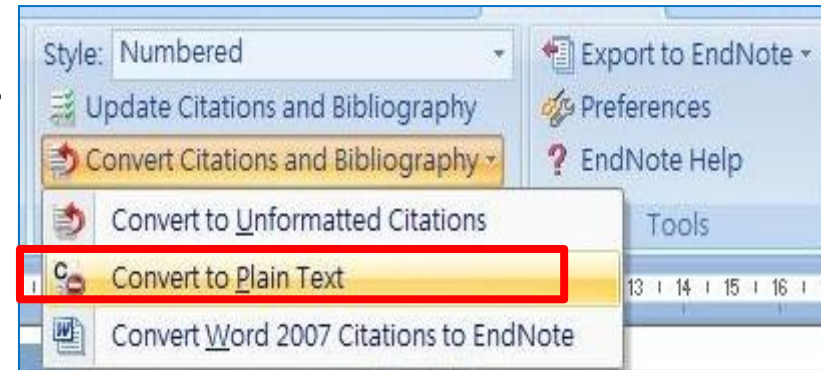
Word 2003

- Word 2003可從EndNote X5的工具列直接點選**Remove field codes**的圖示



- 若為Word 2007的話則是從Bibliography的Covert Citations and Bibliography下的**Covert to Plain Text**。

- 請另存一份移除參數的Word檔，保留有參數的檔案，以方便日後再運用。



Word 2007



淑鳳、林育秀、梁亞文, 2012) The analysis was based on a sample of 334 older adults and their caregivers in Korea. (Kirk et al., 2012) The logistic regression results indicated that the period of being in need of another's help among care-recipients (嚴宣總, 2012), co-residence, caregivers' health condition, previous care experience, (周樺秦、譚延輝、王婷瑩, 2012) and caregivers' free time were correlated with the caregivers' future caregiving. (Jin et al., 2012) ↵

Reference↵

↵

Bazalo, G., Weiss, R. C., Bouchard, J. R., Perry, R. G., Wendt, F. L., & Jewell, J. L. (2012). Impact of pen utilization on insulin cost reduction in long-term care facilities. *Consult Pharm*, 27(6), 411-420. doi: 10.4140/TCP.n.2012.411↵

Jin, H. Y., Yang, T. H., Kim, D. I., Chung, S. R., Seo, J. S., Jang, J. S., . . . Kim, D. S. (2012). High post-clopidogrel platelet reactivity assessed by a point-of-care assay predicts long-term clinical outcomes in patients with ST-segment elevation myocardial infarction who underwent primary coronary stenting. *Int J Cardiol*. doi: 10.1016/j.ijcard.2012.04.154↵

Kirk, S., Beatty, S., Callery, P., Gellatly, J., Milnes, L., & Pryjmachuk, S. (2012). The effectiveness of self-care support interventions for children and young people with long-term conditions: a systematic review. *Child Care Health Dev*. doi: 10.1111/j.1365-2214.2012.01395.x↵

↵

Reference↵

↵

周樺秦、譚延輝、王婷瑩 (2012)。護理之家住民接受不適當藥物治療之情形。
長期照顧雜誌, 16:1, 049-073。↵

嚴宣總 (2012)。長期照顧服務的迷思-老化與長期照顧服務資源的運用。*健康世界*, 437, 033-039。↵

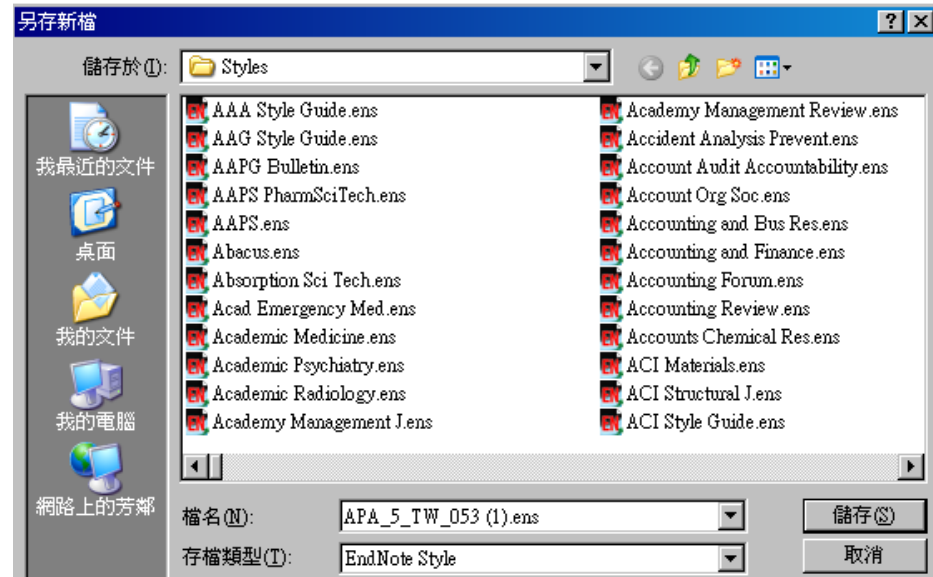
蔡淑鳳、林育秀、梁亞文 (2012)。影響護理之家評鑑結果之因素研究：以 2009 年台灣首次全國護理之家評鑑為例。*臺灣公共衛生雜誌*, 31:2, 119-132。↵

4. 請在這份沒有參數的文件中，繼續插入中文的 Citations(請改成中文的 APA 格式，下載的方式請參閱下一張投影片)
5. 在這份文件中，可以發現中文的參考書目會列在英文的參考書目下方
6. 等插入全部的中文書目之後，再一次移除參數
7. 如此後方的參考書目會中文、英文書目分開排列呈現

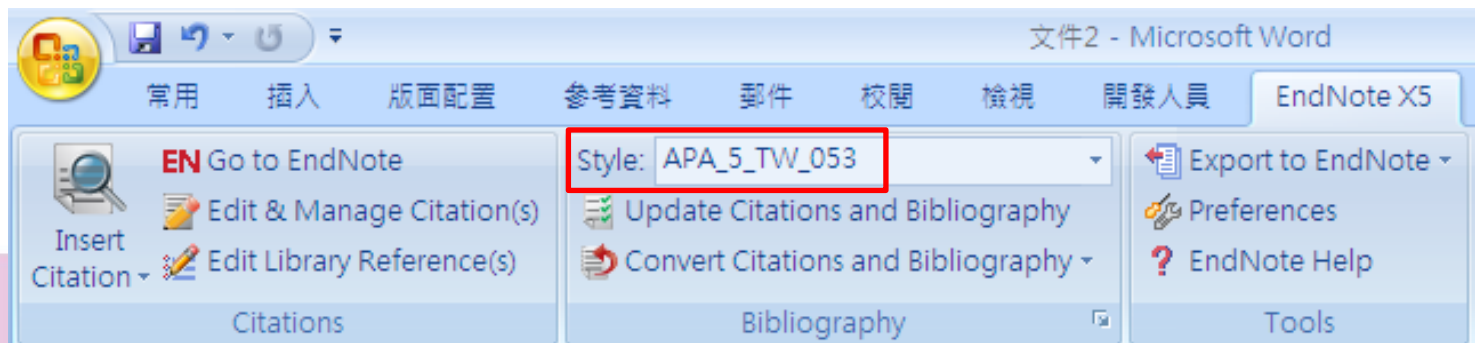
EndNote APA 第五版中文格式下載

下載APA 第五版中文格式存於：

我的電腦 > 本機磁碟(C:) > Program Files > EndNote X5 > Styles中



回到Word中，在Style的下拉選單中，點選 Select Another Style，選擇APA_5_TW_053



The purpose of this study was to address factors related to caregiver burnout as a result of caring for an older adult with a chronic disease. (Bazalo et al., 2012) Characteristics of care recipients and caregivers as well as social support were included to identify the relationships with caregiver burnout. (蔡淑鳳、林育秀、梁亞文, 2012) The analysis was based on a sample of 334 older adults and their caregivers in Korea. (Kirk et al., 2012) The logistic regression results indicated that the period of being in need of another's help among care-recipients (嚴宣總, 2012), co-residence, caregivers' health condition, previous care experience, (周樺秦、譚延輝、王婷瑩, 2012) and caregivers' free time were correlated with the caregivers' future caregiving. (Jin et al., 2012) ↵

Reference↵

[英文參考書目]↵

Bazalo, G., Weiss, R. C., Bouchard, J. R., Perry, R. G., Wendt, F. L., & Jewell, J. L. (2012). Impact of pen utilization on insulin cost reduction in long-term care facilities. *Consult Pharm*, 27(6), 411-420. doi: 10.4140/TCP.n.2012.411↵

Jin, H. Y., Yang, T. H., Kim, D. I., Chung, S. R., Seo, J. S., Jang, J. S., . . . Kim, D. S. (2012). High post-clopidogrel platelet reactivity assessed by a point-of-care assay predicts long-term clinical outcomes in patients with ST-segment elevation myocardial infarction who underwent primary coronary stenting. *Int J Cardiol*. doi: 10.1016/j.ijcard.2012.04.154↵

Kirk, S., Beatty, S., Callery, P., Gellatly, J., Milnes, L., & Prymachuk, S. (2012). The effectiveness of self-care support interventions for children and young people with long-term conditions: a systematic review. *Child Care Health Dev*. doi: 10.1111/j.1365-2214.2012.01395.x↵

[中文參考書目]↵

周樺秦、譚延輝、王婷瑩 (2012)。護理之家住民接受不適當藥物治療之情形。*長期照護雜誌*, 16:1, 049-073。↵

嚴宣總 (2012)。長期照顧服務的迷思-老化與長期照顧服務資源的運用。*健康世界*, 437, 033-039。↵

蔡淑鳳、林育秀、梁亞文 (2012)。影響護理之家評鑑結果之因素研究：以 2009 年台灣首次全國護理之家評鑑為例。*臺灣公共衛生雜誌*, 31:2, 119-132。↵

8. 移除參數之後，運用 Word 原本有的功能，調整一下格式，即完成中英文合併的書目囉！

[提醒]：兩份原有參數的文件，建議都另存一份檔案，以備之後調整之用喔！

碩睿資訊有限公司

服務電話

02-77315800

服務信箱

services@customer-support.com.tw

服務網址

http://www.sris.com.tw